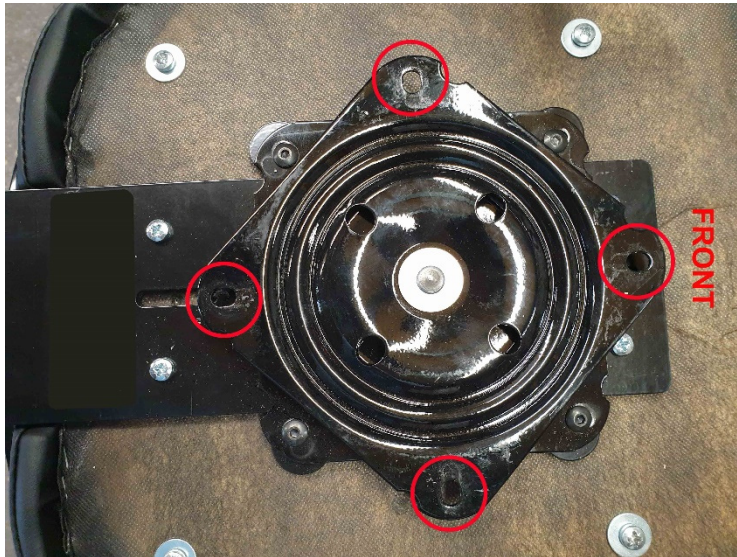


Assembly Instructions for 4-Legged Gaming Stools

Tools required: 10mm spanner or battery-operated impact wrench with 10mm socket.



Step 1. Place the seat/backrest assembly upside down on a table or chair. Remove the 4 x M6 bolts so that the 4-legged frame can be attached to the swivel mechanism. It is easier if the swivel mechanism is rotated as shown above so that the 4 fixing holes in the swivel mechanism are “exposed”.

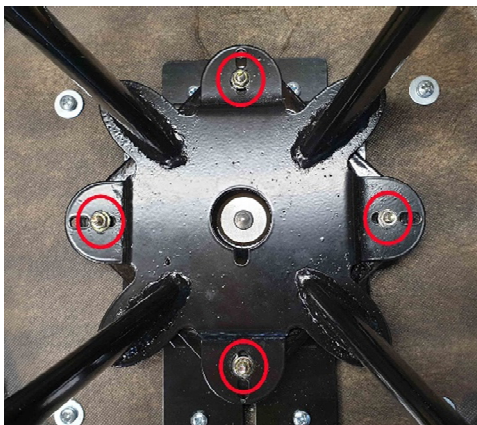


Step 2. Place the 4-legged frame on top of the swivel mechanism.

Step 3. Insert the M6 bolts ‘upwards’ through the swivel plate and the 4-legged frame. Make sure you use the frame holes as shown.

Step 4. Fit the nut to the bolt. Do not tighten the nuts until all 4 bolts have been fitted.

Step 5. Tighten the nuts using a 10mm spanner or impact tool with a 10mm socket spanner.



Step 6. Completed assembly.