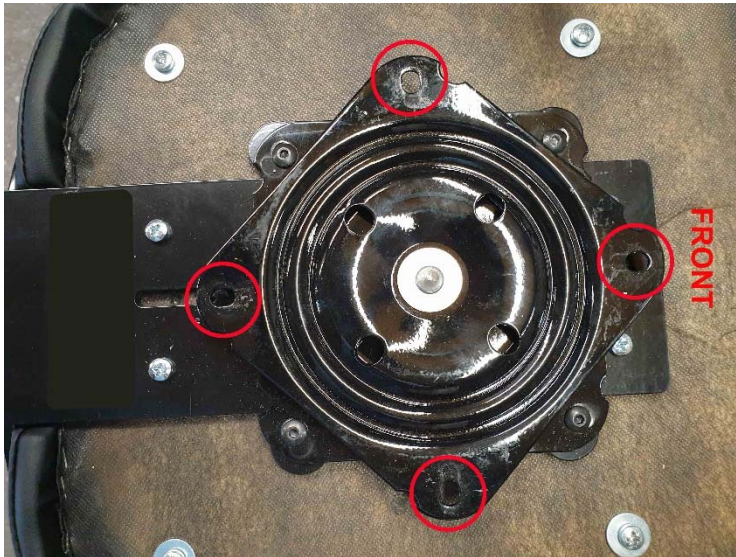


## Assembly Instructions for 4-Legged Gaming Stools

**Tools required:** 10mm spanner or battery-operated impact wrench with 10mm socket.



**Step 1.** Place the seat/backrest assembly upside down on a table or chair. Remove the 4 x M6 bolts so that the 4-legged frame can be attached to the swivel mechanism. It is easier if the swivel mechanism is rotated as shown above so that the 4 fixing holes in the swivel mechanism are “exposed”.

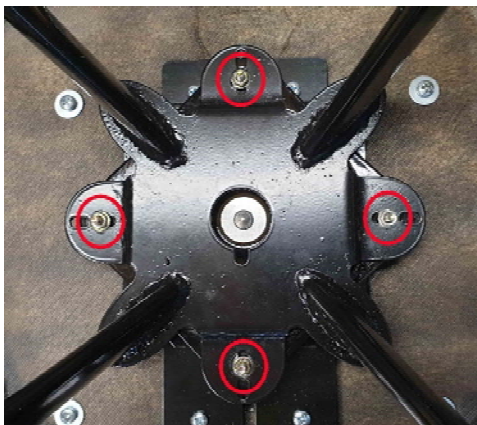


**Step 2.** Place the 4-legged frame on top of the swivel mechanism.

**Step 3.** Insert the M6 bolts ‘upwards’ through the swivel plate and the 4-legged frame. Make sure you use the frame holes as shown.

**Step 4.** Fit the nut to the bolt. Do not tighten the nuts until all 4 bolts have been fitted.

**Step 5.** Tighten the nuts using a 10mm spanner or impact tool with a 10mm socket spanner.



**Step 6.** Completed assembly.